

Building the Future: Tulsa Ports

Tulsa Ports | Burns & McDonnell



Oklahoma Society of Professional Engineers
Oklahoma Engineering Conference
June 2025



Agenda

01 // TULSA PORTS: THEN AND NOW

02 // THE VISION AND PLANNING

03 // TRANSFORMATIVE PROJECTS

04 // THE FUTURE IS BRIGHT

05 // Q&A

Introductions



Deanne Hughes, PE
Tulsa Ports
Chair of the Board of
Directors



Dan Grisham
Tulsa Ports
Deputy Port Director,
Director of Operations



Drue Smallwood, PE
Burns & McDonnell
Program Manager

01

TULSA PORTS:
THEN AND NOW

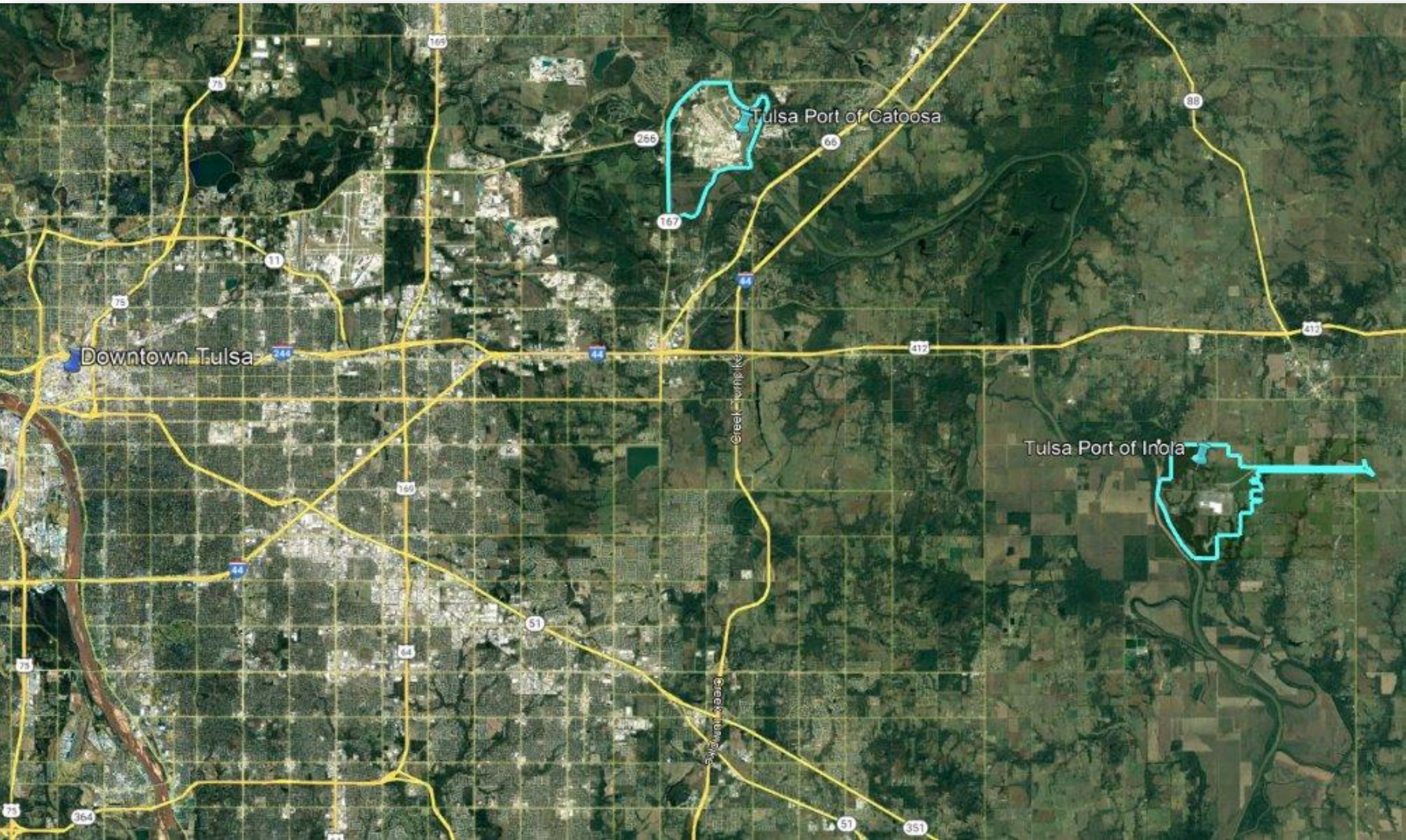
PORT HISTORY

Presidential Passage

President Richard Nixon dedicated & named the waterway on June 5, 1971

“It is a pleasure for me to be here on the Oklahoma seacoast.”







Tulsa Port of Catoosa

2,500

Acres

70

Companies

~1,000

Semi trucks per day

+2 million

Average tons per year by barge

90%

Of barge tonnage is AGRICULTURE products





Tulsa Port of Inola

2,200
Acres

- Barge Wharf
- Sofidel
- Short line rail



Multi-Modal Freight

There are **25,000 miles** of inland, intercoastal, deep draft and coastal waterways used for transportation in the U.S.

Barges being pushed by towboats are moving cargo on this highway of water.



METALS



DRY FERTILIZER



LIQUID PRODUCTS



PROJECT CARGO



WHEAT & SOYBEAN



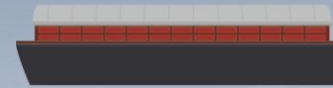
MODES OF TRANSPORTATION CAPACITY COMPARISON



15 RAILCARS



60 TRUCKS

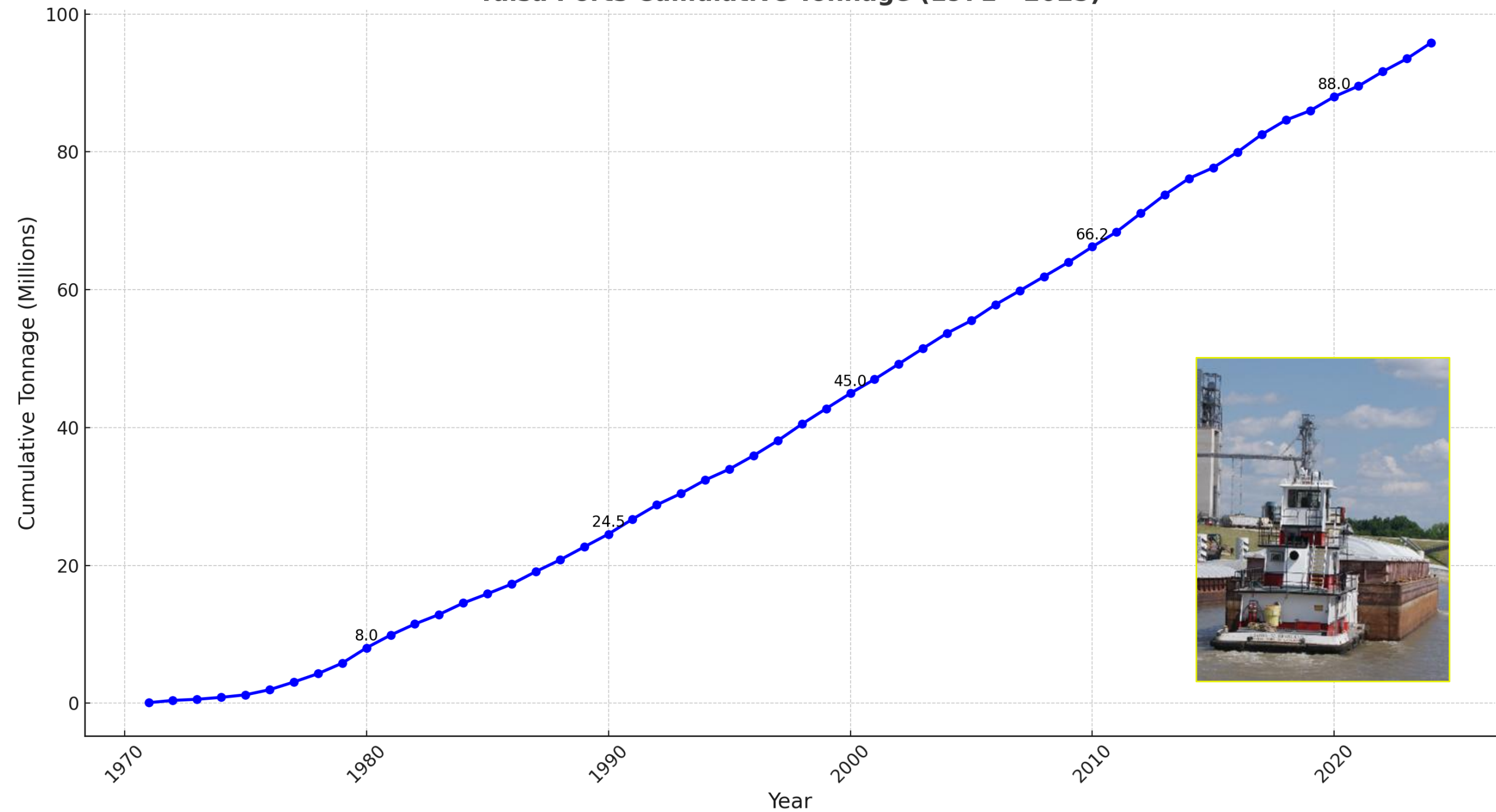


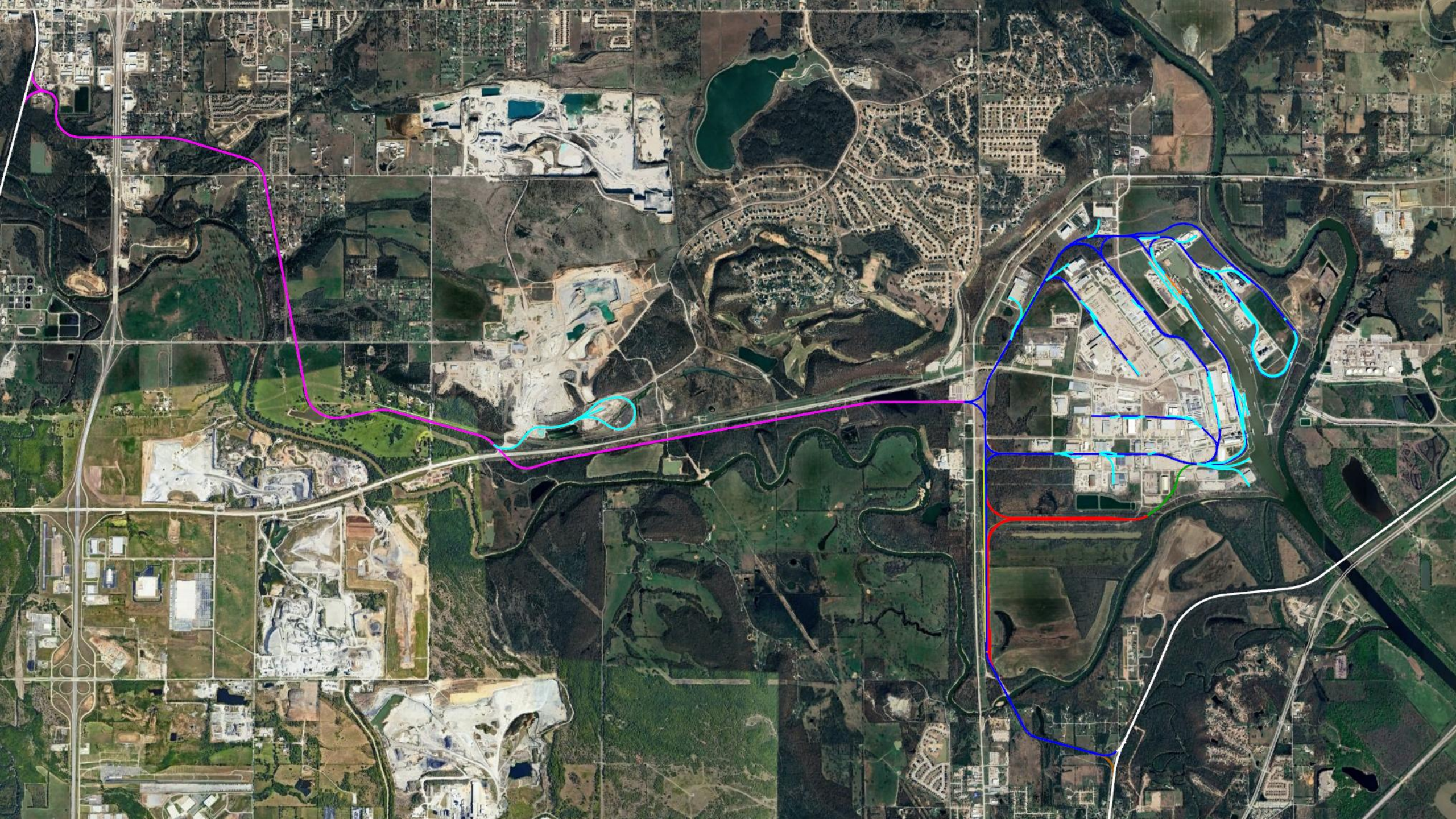
1 BARGE



TULSA PORTS
BARGE · RAIL · INDUSTRIAL PARK
CATOOSA · INOLA

Tulsa Ports Cumulative Tonnage (1971 - 2025)





2022

THE VISION AND STRATEGY

WATERSHED MOMENTS



INLAND OPPORTUNITY

Why Tulsa Ports?

- International attention from major companies
 - Contiguous acres near a metropolitan area are scarce
 - Collaboration and collegiality of larger community unique

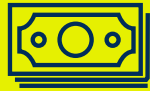
What Did We Learn?

- Waterway access, power, rail, roads, wastewater treatment at Inola

The Strategy



Rebranded



**Economic
Development
Engine**



Coalitions



Planning



**Making an
Impact**



**Focus on
Future**



03

TRANSFORMATIVE PROJECTS

01



STRATEGIC INVESTMENTS

01

Wastewater Treatment Plant

Design-Build: Flexible permitting with ODEQ, expedited schedule, adaptable scope, collaboration with Inola

Importance: Timeline to build & permit a WWTP is a deal killer (or maker) for quick-moving end users

02



STRATEGIC INVESTMENTS

02

Unit Train

Pooled Financing: Funded by state funds and pool financing, served by BNSF, provides capacity for two unit trains

Importance: Connects two Class 1 railways, improves rail switching throughout the port, going outside of typical BNSF process to approve before specific identified customer and carload projections

03



STRATEGIC INVESTMENTS

03

Inola Fleeting Area

Plan: Develop new fleeting area and barge loading and unloading facilities.

Importance: Project will expand Tulsa Port's waterway shipments by 50%.



STRATEGIC INVESTMENTS

04

Verdigris Southern Railroad

Railroad: Track extends from Union Pacific mainline to the Port of Inola.

Importance: Connection to mainline railway attracts tenants.

04

THE FUTURE IS
BRIGHT

Transformative Impact

STRATEGIC INVESTMENT

Emirates Global Aluminum selects the Port of Inola



Oklahoma Selected for Historic \$4 Billion Investment from Emirates Global Aluminium

May 16, 2025 | Filed Under: Business (<https://www.okcommerce.gov/category/business/>)

Governor Kevin Stitt and the Oklahoma Department of Commerce announced a historic investment in Oklahoma as Emirates Global Aluminium (<https://www.ega.ae/en>) (EGA), the world's largest producer of 'premium aluminum', has selected the state as the preferred site for the first new primary aluminum production plant to be built in the United States in 45 years. The \$4 billion project is expected to create 1,000 direct jobs, 1,800 indirect jobs and enhance Oklahoma's ability to significantly grow its base of additional manufacturing jobs.

"This is a monumental day for Oklahoma," said Governor Kevin Stitt. "We are proud to welcome Emirates Global Aluminum to our state and excited for the generational impact this investment will have on our future. As President Donald Trump looks to onshore our nation's supply chain for critical minerals, Oklahoma is leading the way in this sector. Thanks to our pro-business environment, Oklahoma is quickly becoming the critical minerals headquarters of the United States."

The facility will be located on more than 350 acres at the Tulsa Port of Inola (<https://tulsaports.com/locate-here/tulsa-port-of-inola/>), a 2,200-acre industrial park with access to rail, barge transportation and global waterways. Once complete, the facility will be the largest of its kind in the U.S., producing billets, sheet ingots, high-purity aluminum, and foundry alloys. The project reflects President Trump's vision for bringing manufacturing back to the U.S. and will almost double the nation's domestic aluminum production.

EGA demonstrated their dedication to Oklahoma by entering into a Memorandum of Understanding (MOU) with Governor Stitt on Monday, April 21, which detailed the conditions of EGA's investment in the state. The agreement is contingent upon the Oklahoma Legislature approving the terms outlined in the MOU.

Historic Investment

Emirates Global Aluminum (EGA) plans to invest **\$4 billion** to build the first new primary aluminum production plant in the U.S. in 45 years, located at the Tulsa Port of Inola.

Economic Impact

The project is expected to create approximately **1,000 direct jobs and 1,800 indirect jobs**, significantly boosting Oklahoma's manufacturing sector and economy.

Strategic Significance

The facility will support critical industries such as aerospace and defense and strengthen the U.S. supply chain.

05

Q&A

Q&A



Deanne Hughes, PE
Tulsa Ports
Chair of the Board of Directors
Deanne.tulsaports@gmail.com



Dan Grisham
Tulsa Ports
Deputy Port Director,
Director of Operations
Daniel@tulsaports.com



Drue Smallwood, PE
Burns & McDonnell
Program Manager
dsmallwood@burnsmcd.com