

City of Wichita Drought Response & Water Supply Resilience

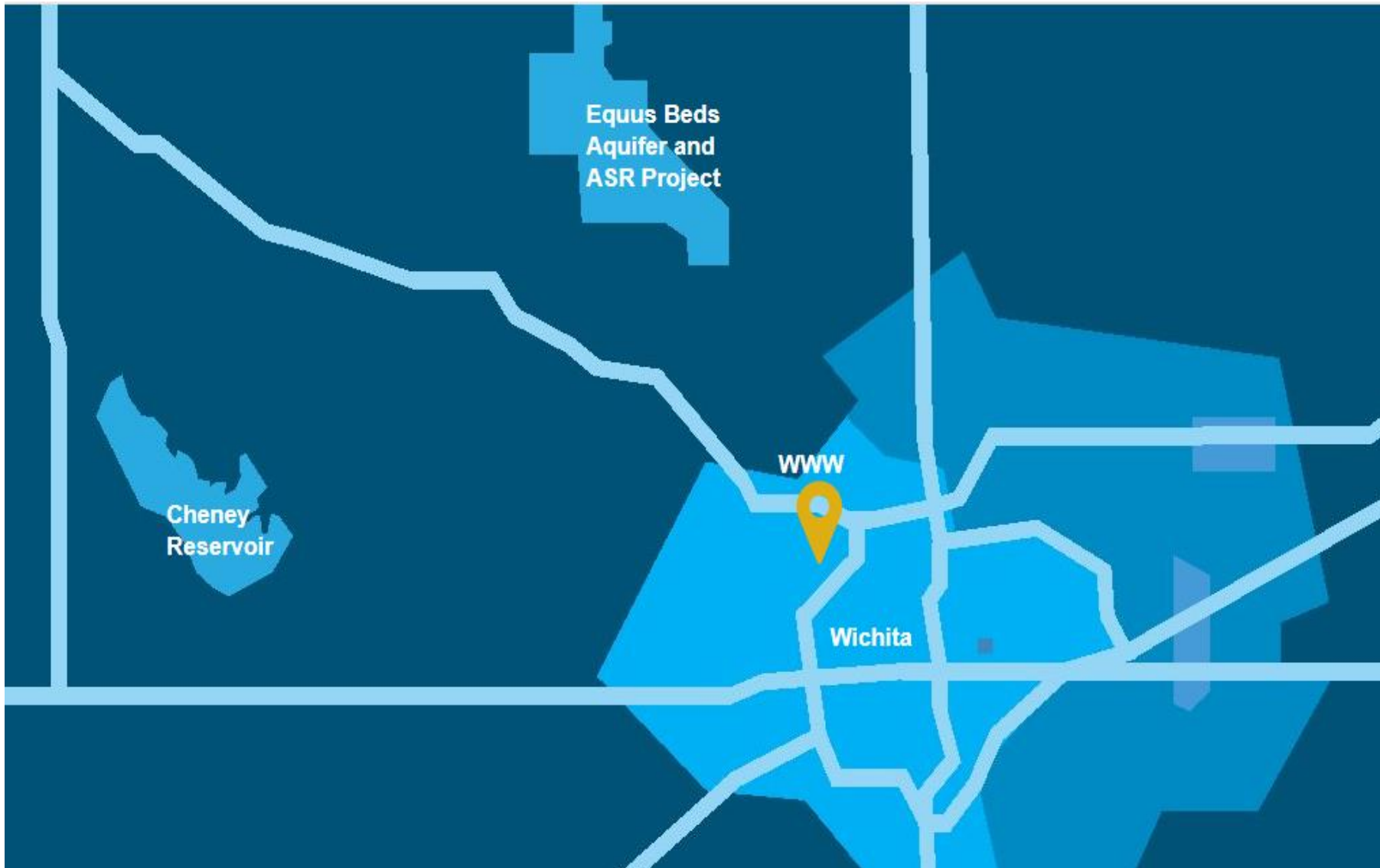


Gary Janzen. P.E. – Director
Public Works and Utilities

June 12, 2025



Wichita Raw Water Sources



- Wichita raw water two main sources:
 - Cheney Reservoir (surface water)
 - Equus Beds Wellfield (groundwater)
 - 92% full
- *El Dorado not a viable source*

Wichita Water Treatment

- Wichita provides water to 500,000 residents:
 - Wichita: 150,000+ residential & commercial customers
 - 11 Wholesale Customers: Bel Aire, Benton, Bentley, **Derby**, Kechi, Park City, Rose Hill, **Valley Center**, RWD 1-3-5
 - McConnell AFB

1939 Water Treatment Plant – City Council approved converting to emergency use



2025 Wichita Water Works

Cheney Pool Condition



June 6, 2025:

- Water level is 4.73 feet below normal pool
- Stage 2 watering restrictions remain in place, expected through all of 2025

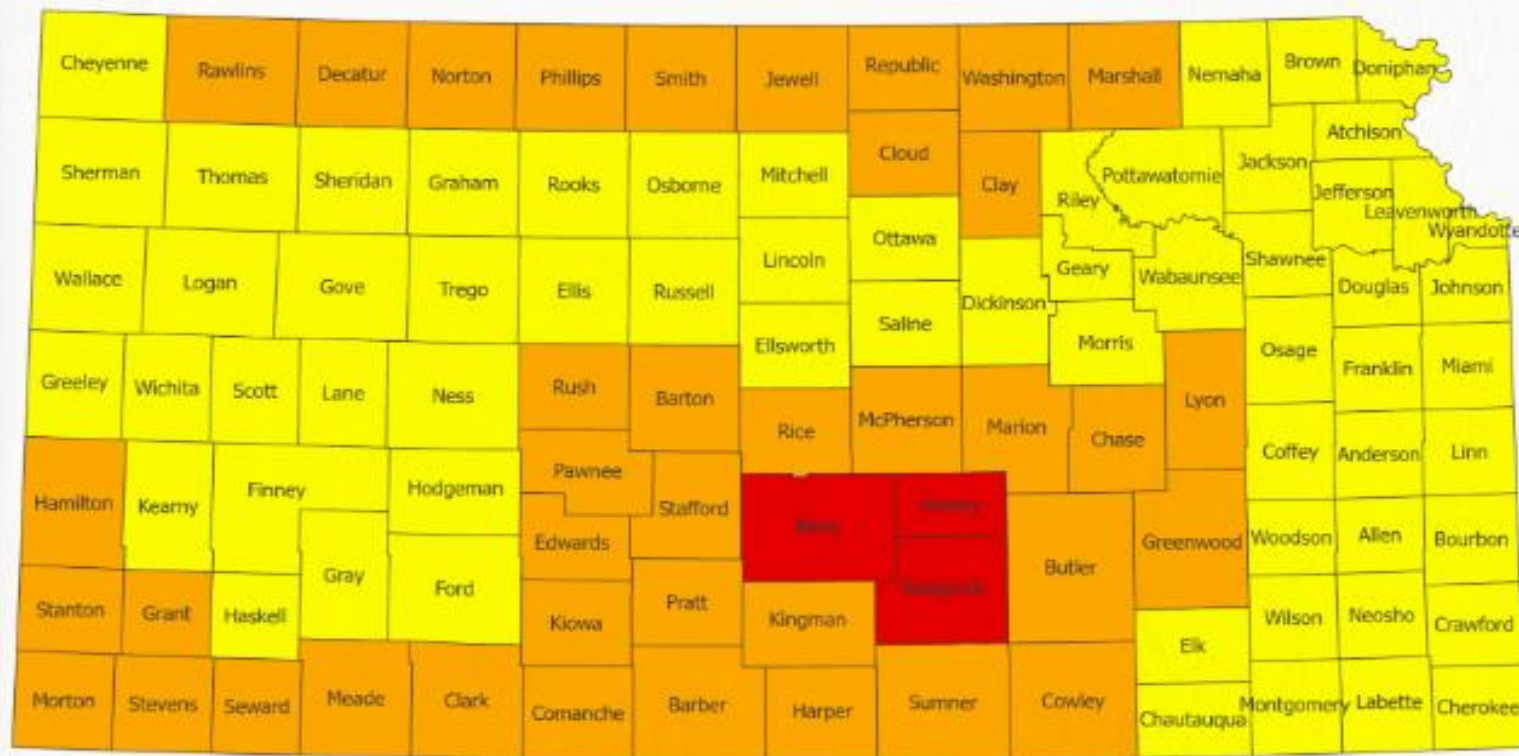


Cheney Capacity/Dam Repair



Governor's Drought Declaration

Governor Declares Drought Emergency, Warnings and Watches
for Kansas Counties
May 12, 2025



■ Emergency ■ Warning ■ Watch



Drought Response Plan

Stage 1 Activated January 2023

Triggered when the 12-month moving average is **between 70% and 89%**

- Voluntary water conservation measures
- Incentives or rebates to encourage indoor and outdoor water conservation
- City of Wichita Internal Conservation Plan enacted

Stage 2 Activated August 5, 2024

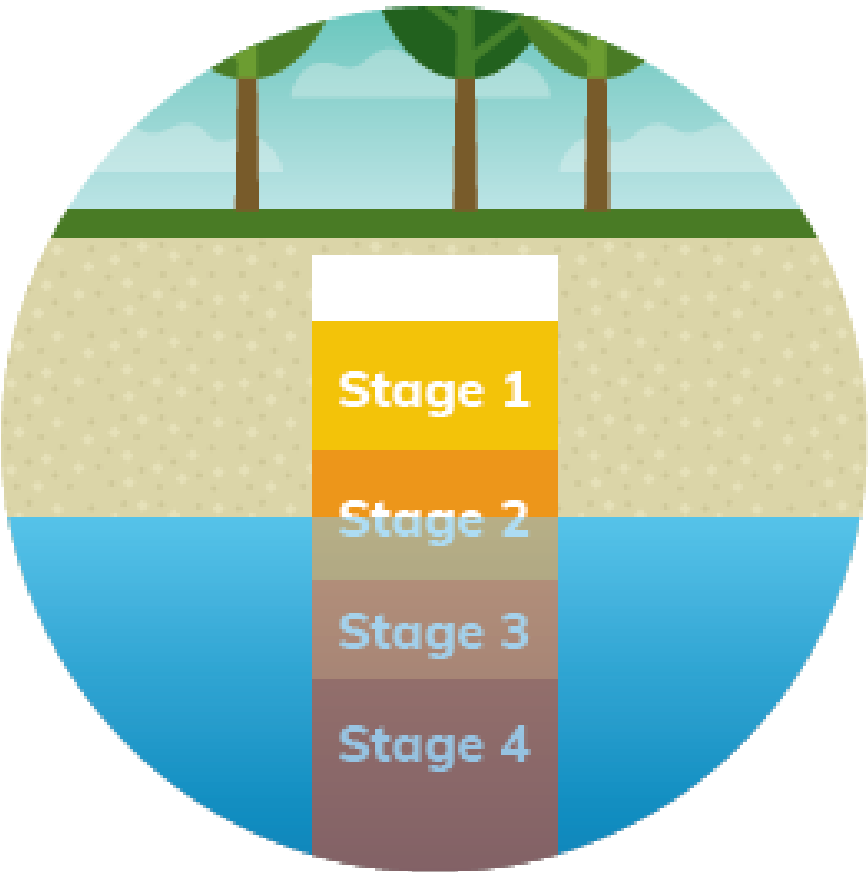
Triggered when the 12-month moving average is **between 50% and 69%.**

- **Mandatory water conservation:**
 - Restricting outdoor water usage to one day per week
 - Prohibiting all customers from using outdoor water from 10am-8pm*

* Some exemptions apply

Stage 2 Penalties/Fines

- 1st violation written warning
- 2nd violation \$50 administrative fee
- Subsequent violation \$100 per violation



Drought Response Plan

Stage 3

Triggered when the 12-month moving average is **between 35% and 50%**

- All usage of outdoor water prohibited*

* Some exemptions apply

Stage 3 Penalties/Fines

- 1st violation written warning
- 2nd violation \$250 administrative fee
- Subsequent violation \$500 per violation

Stage 4

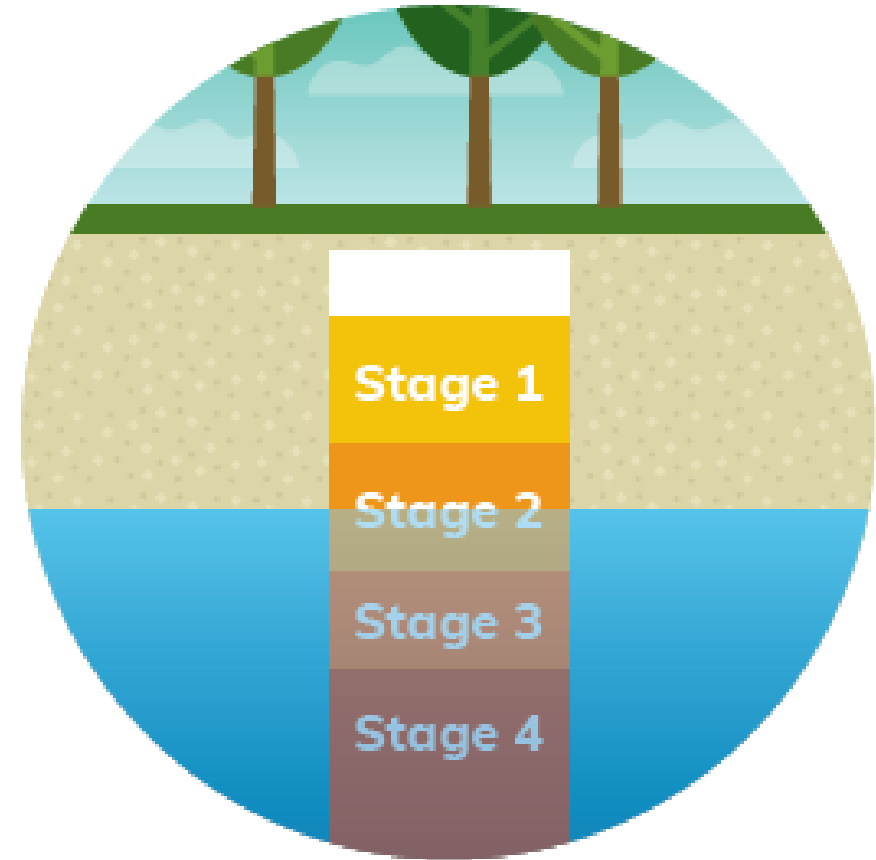
Triggered when the 12-month moving average is **between 0% and 34%**

- Mandatory water conservation measures for all customers, including prohibition of usage of outdoor water. **No exemptions.**
- All customers are required to reduce their water usage by 15% from their Average Winter Consumption*

* Some exemptions apply

Stage 4 Penalties/Fines

- 1st violation written warning
- 2nd violation \$250 administrative fee
- Subsequent violation \$500 per violation and installation of a water flow restrictor.



Drought Response – Stage 2

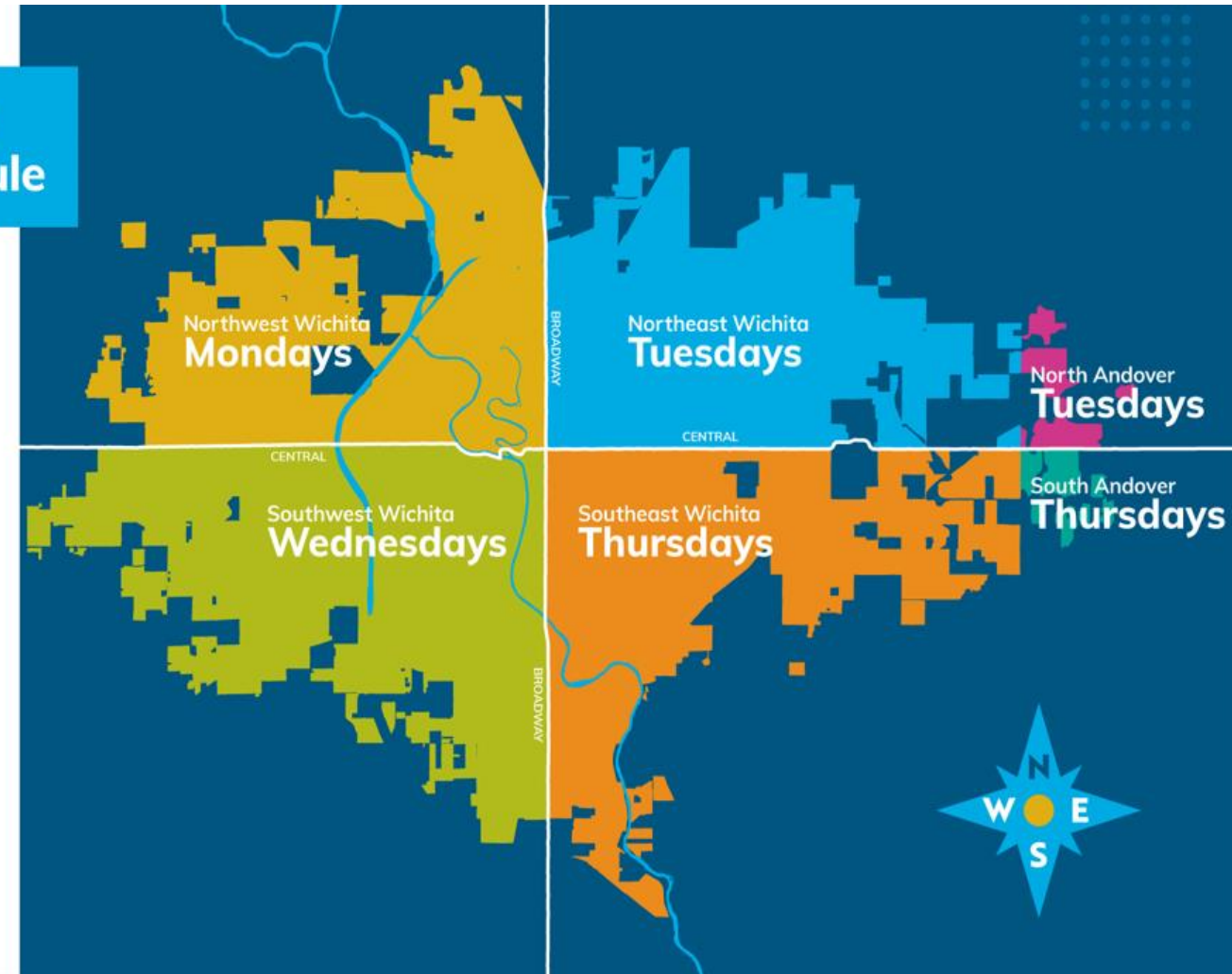
Mandatory Water Restrictions

- Once-weekly restrictions were implemented August 5, 2024 and remain in place

Stage 2 Drought Watering Schedule

- Customers at real properties **northwest of Central & Broadway** may use outdoor water on **Mondays**.
- Customers at real properties **northeast of Central & Broadway** may use outdoor water on **Tuesdays**.
- Customers at real properties **southwest of Central & Broadway** may use outdoor water on **Wednesdays**.
- Customers at real properties **southeast of Central & Broadway** may use outdoor water on **Thursdays**.

No residential watering on Friday/Saturday/Sunday.
No watering from 10am-8pm any day.



Resources – [savewichitawater.com](https://www.savewichitawater.com)

[GOVERNMENT](#)[DEPARTMENTS](#)[BUSINESS](#)[COMMUNITY](#)[HOW DO I...](#)[Drought Update](#)[Irrigation Education](#)[How You Can Save Water](#)[Internal Conservation Plan](#)[Lawn Care](#)[Managing Supply](#)[Water Conservation Rebate Program](#)[Home](#) | [Departments](#) | [Public Works & Utilities](#) | [Water](#) | [Save Wichita Water](#)

SAVE WICHITA WATER

[Share](#)[Facebook](#)[Twitter](#)[Pinterest](#)[LinkedIn](#)

City of Wichita Drought Stage

Stage 2

Cheney Lake Level (6/2/25)

68.32% Full5.61 ft **BELOW** normal

Cheney Level (12 Month Avg) 6/2/25

60.1% Full

- [Well Sign](#)
- [H2-NO Flier 1 \(PDF\)](#)
- [Well Water Yard Sign 1 \(PDF\)](#)
- [Well Water Yard Sign 2 \(PDF\)](#)
- [Watering Schedule Cards 1 \(PDF\)](#)
- [FAQs on Drought Stage 2 \(PDF\)](#)
- [FAQs for SaveWichita Water SPANISH al \(PDF\)](#)
- [H2-NO FLIER Espanol \(PDF\)](#)
- [Se ha determinado que esta violando la Ordenanza de la Ciudad de Respuesta a la Sequia de la Etapa 2 \(PDF\)](#)
- [Wichita Escalando a la Etapa 2 de Respuesta a la Sequia \(PDF\)](#)

[Sign up for updates about the drought.](#)[Select Language](#)[Google Translate](#)



Strategic Planning and Innovation for the Future

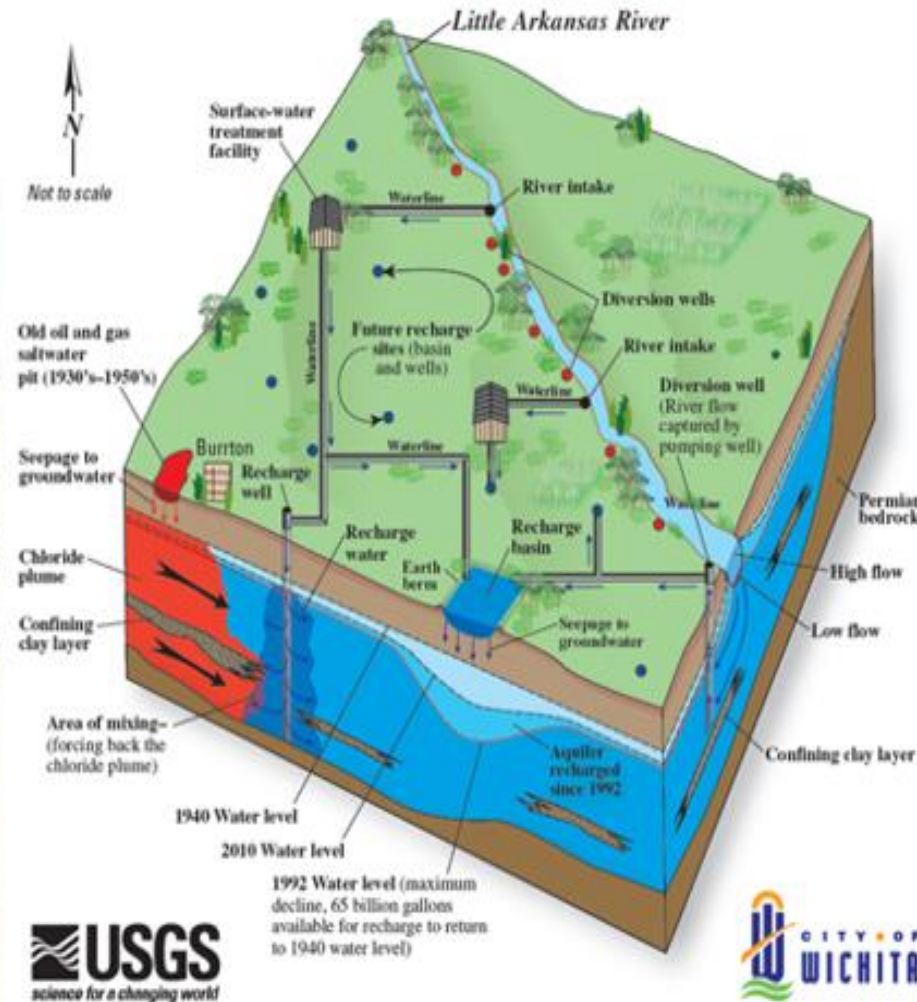


Aquifer Storage and Recovery (ASR) – keeping the Equus Beds aquifer healthy

Little Ark River



Equus Beds Aquifer—Artificial Recharge Process



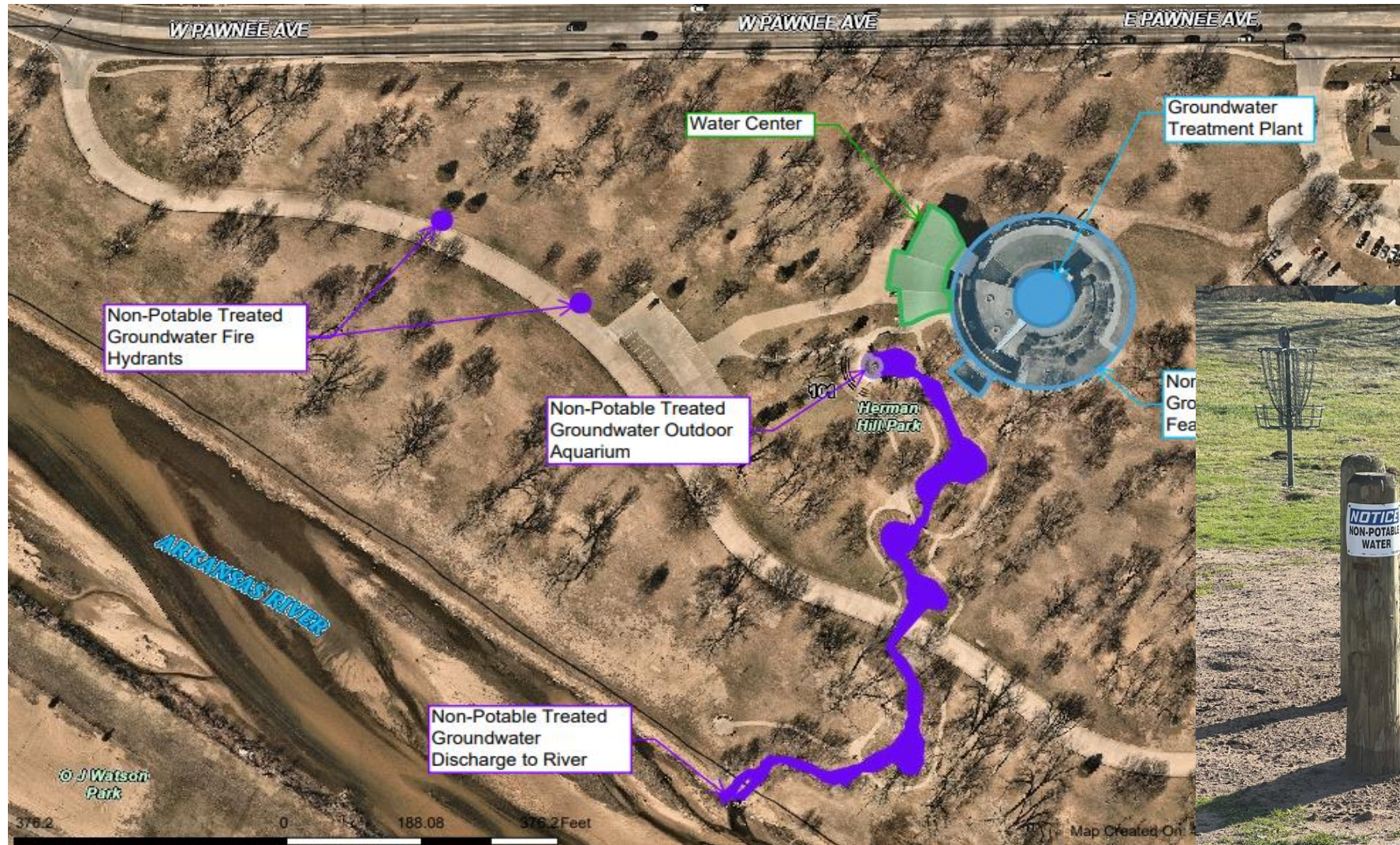
ASR Recharge Basin



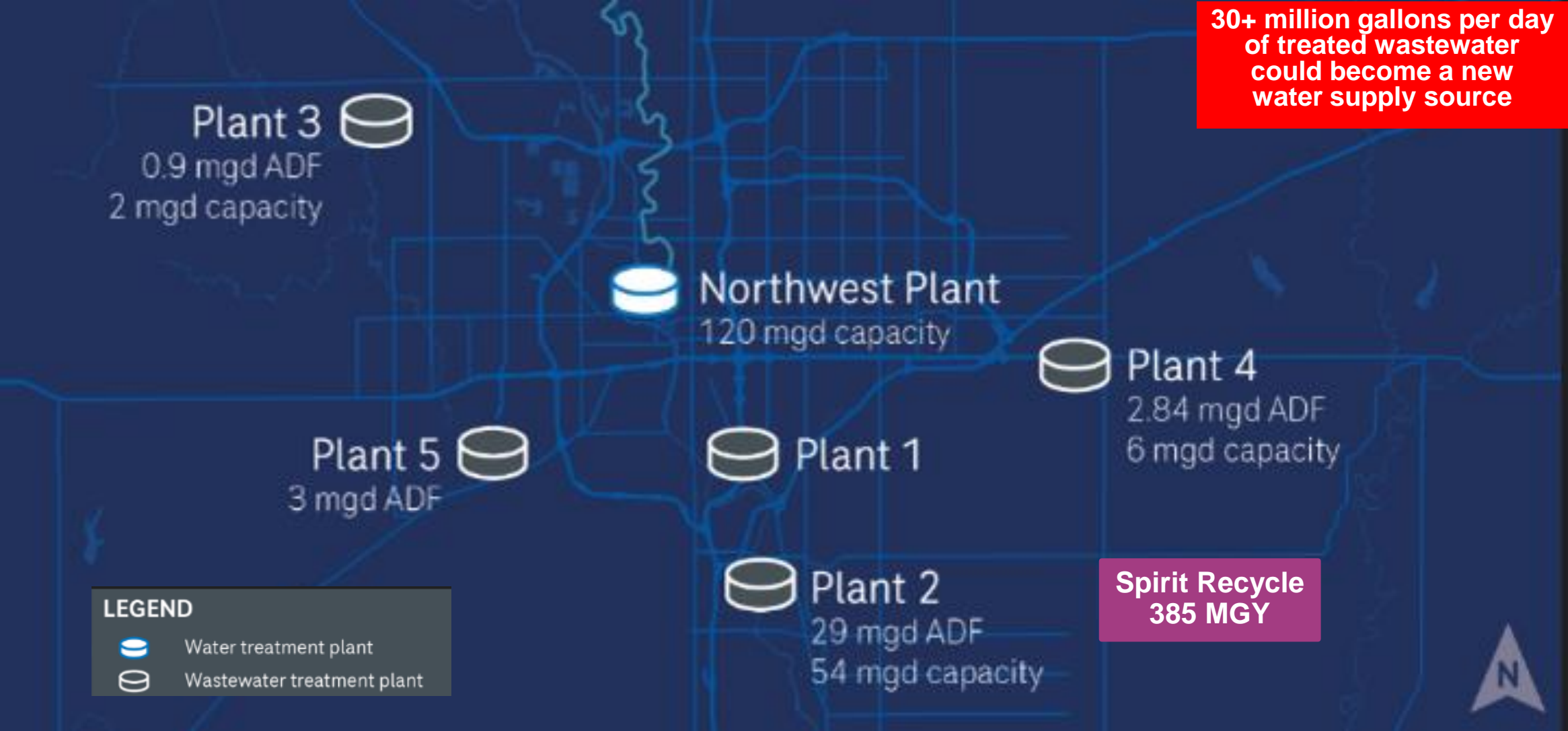
Wichita Water Works – new water treatment plant



Treated Groundwater Available at Herman Hill Park – www.Wichita.gov/reclaimedwater



Water Recycling & Reuse – expanding our long-term water supply



Spirit Industrial Reuse

Pipe routing from City WWTP to Spirit

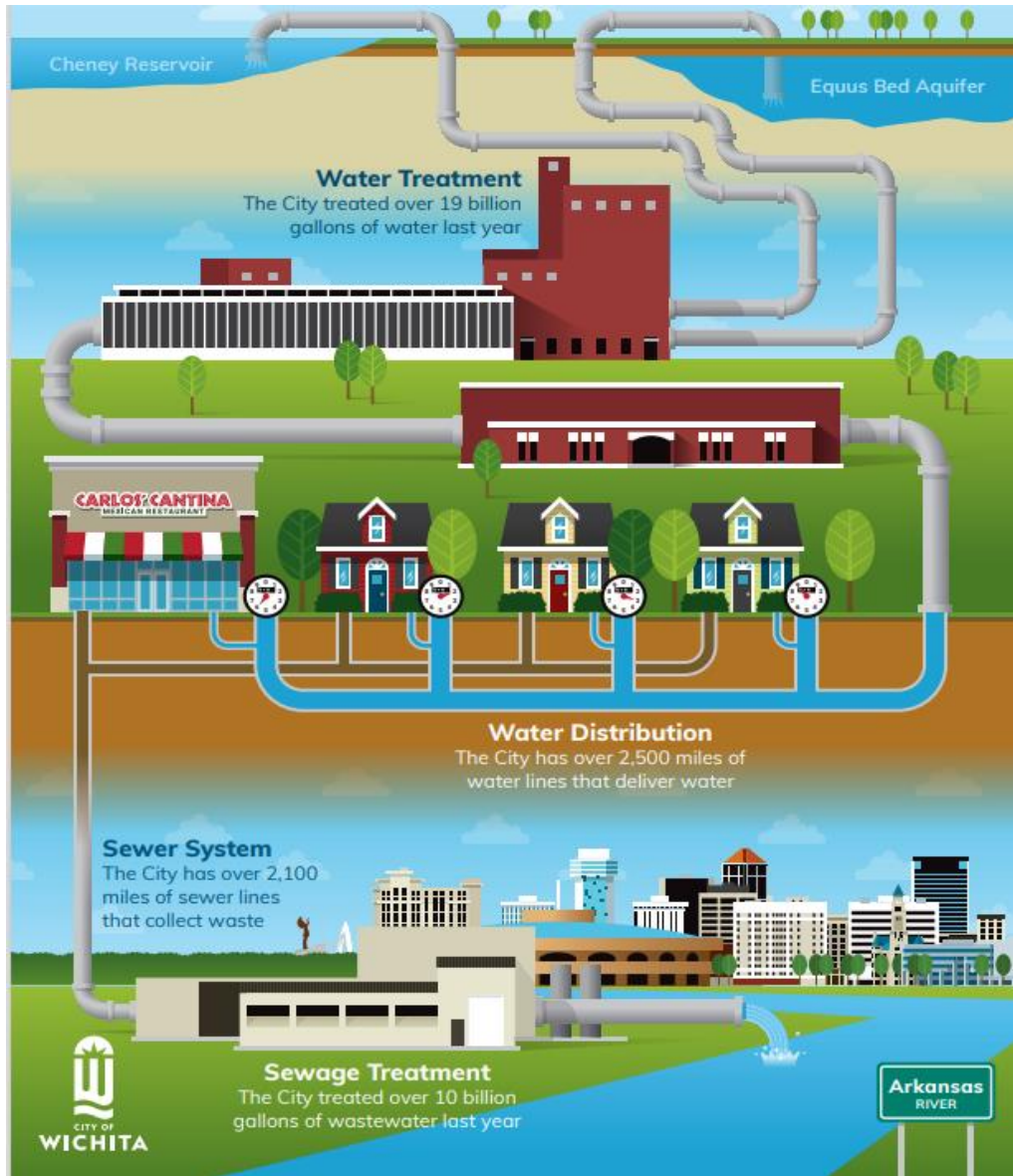


Pump station sending treated wastewater to Spirit



The Future of Recycling & Reuse

The Wichita Water Cycle

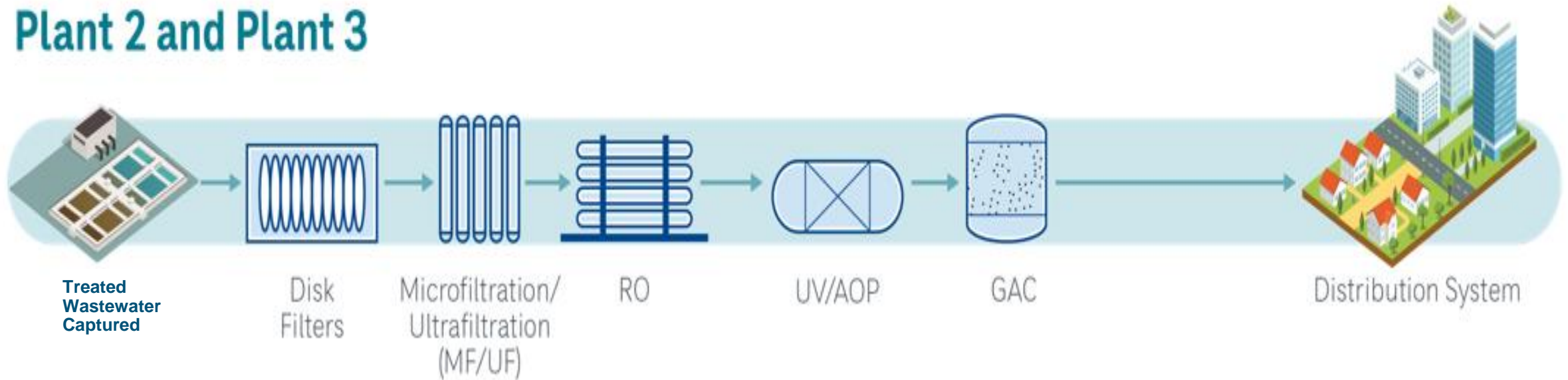


Treated wastewater discharge to Ark River – 25 million gallons per day available to reclaim/recycle



Treated Wastewater Recycling Process (Direct Potable Reuse - DPR)

Plant 2 and Plant 3



- **DPR creates an additional water supply for the future**
- **City Council approved consultant contract and initial funding May 13, 2025**
- **Staff met with state agencies to initiate development of state regulations**



Landscape/Development Practices



Landscape Ordinance
Guidebook



ing Department



What Others Are Doing – OKC alternate day watering



SUN	MON	TUE	WED	THU	FRI	SAT
25	26	27	28	29	30	1
2	3	4	5	6	7	8
9	10	11	12	13	14	15
16	17	18	19	20	21	22
23	24	25	26	27	28	29
30	1	2	3	4	5	6



City of Wichita Drought Response & Water Supply Resilience



Questions?

June 12, 2025

